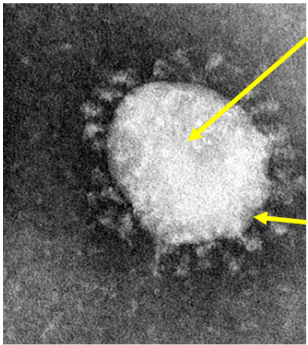
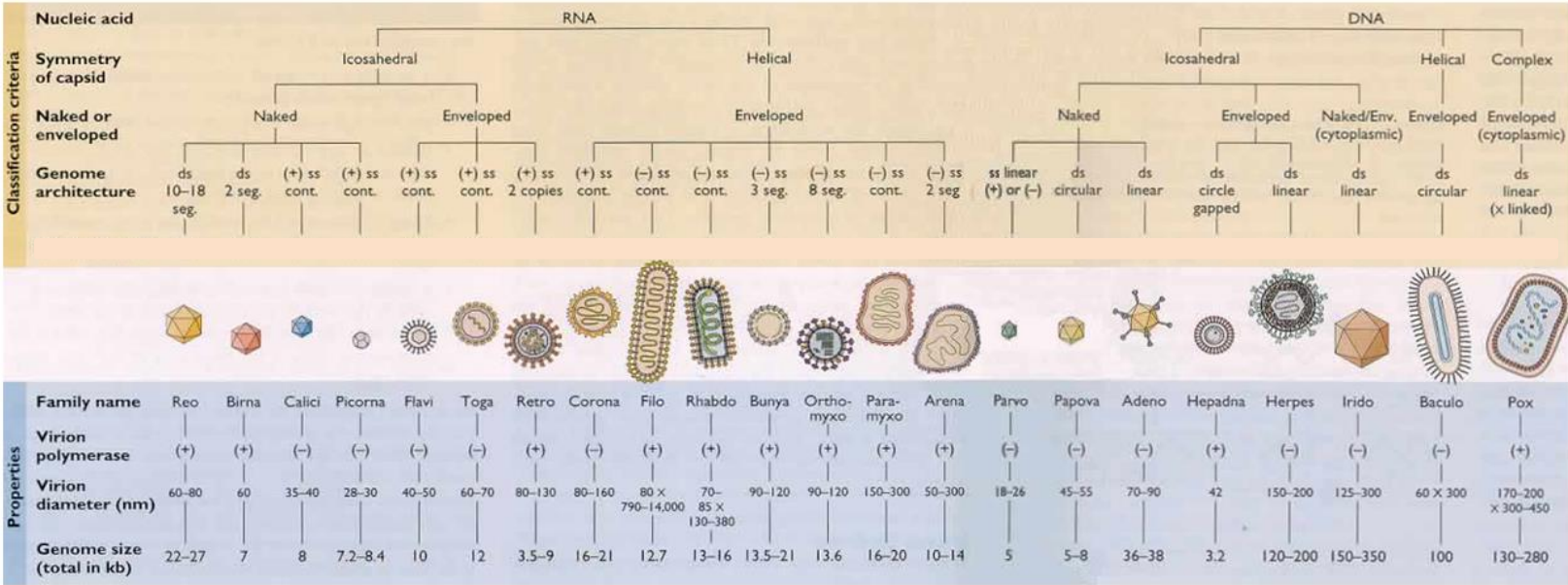


What's the difference between Feline Coronavirus & SARS-CoV2 (COVID-19)?



RNA genome inside lipid envelope

Having an RNA genome means these viruses can mutate and evolve quickly.

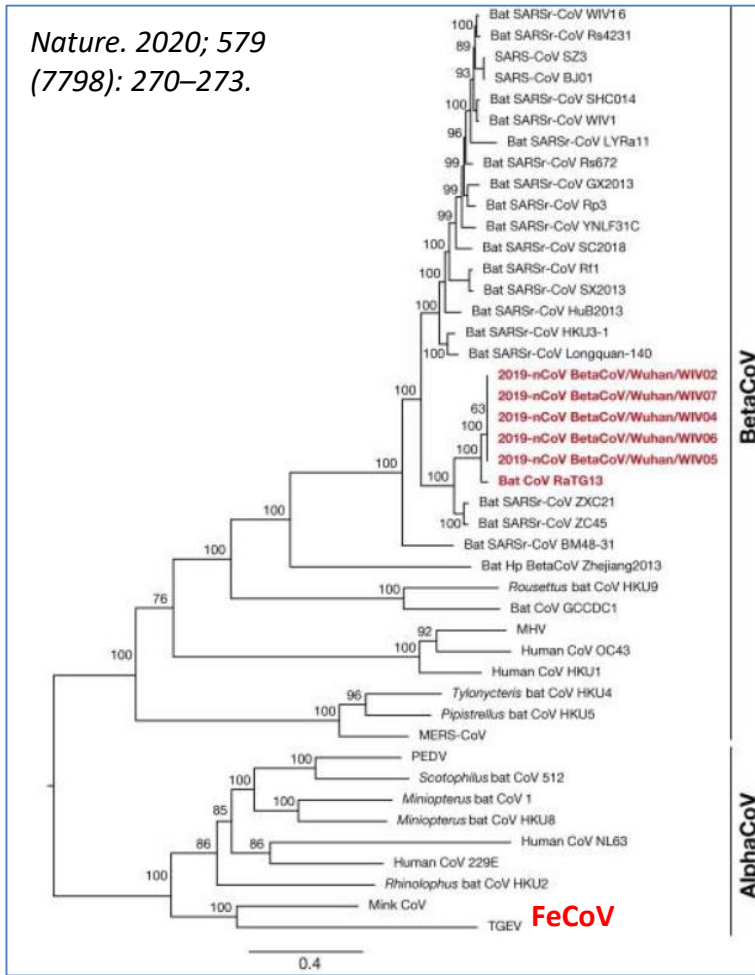


Lipid envelope

Essential for infectivity but fragile. Means coronaviruses are generally short lived in the environment and relatively susceptible to soap and alcohol based disinfectants.

What's the difference between Feline Coronavirus & SARS-CoV2 (COVID-19)?

Nature. 2020; 579 (7798): 270–273.



Only **63%** similar
mostly limited to just
1/4 of the genome



Diagnostic tests are
unlikely to cross-react

SARS-CoV2 can infect cats